

Performance Measurement

Supply Chain Results Delivery

Operational Improvement

Software Implementation



Performance Measurement

Delivering Supply Chain Results

“MetaChain played an important part in working with Cargill to implement our Supply Chain solution. The MetaChain consultants provided a blend of supply chain processes and technical knowledge to meet our business requirements.”

Cheryl Fischer
Planning Application Manager
Cargill Foods

“In order to receive additional Supply Chain benefits within an aggressive timeline, it was very critical to Coca-Cola FEMSA that an experienced consulting team work together with us. MetaChain’s expansive APS product expertise, their Supply Chain knowledge, and commitment to succeed have been critical contributors to our achievements so far.”

Hector Calva
Mfg. And Logistics Mgr.
Coca-Cola FEMSA

MetaChain, Inc.
Anil Thomas
anil_thomas@metachain.com
Phone: 917-921-9631

MetaChain’s Performance Measurement offering provides solutions to guide and measure the effectiveness of an organization’s supply chain. Performance Measurement, Operational Improvements, and Software Implementations are the three critical levers on which MetaChain’s Supply Chain Results Delivery practice is based. Aligning an organization’s efforts in these three areas allows a company to get more value out of each supply chain investment and to capture sustainable financial results.

Performance Measurement

MetaChain helps clients to develop supply chain goals, metrics, and incentives that drive the organization towards results. By measuring and communicating the progress towards these goals, the organization develops a better understanding of which areas of the supply chain need increased focus in order to hit their targets. Operational improvement and supply chain software projects are evaluated using the performance measurement process.

MetaChain works with clients to implement performance measurement solutions that provide management dashboards, multi-level Key Performance Indicators (KPI’s), drill downs and other capabilities. These tools, not only supply performance indicators, they also provide alerts and actionable information.

Supply Chain Dashboard

The dashboard provides the highest level of information and summarizes the status of the supply chain. It uses “traffic lights” to show how each link of the supply chain is performing in the areas of Customer Service, Profit, Capital Utilization, and SCM Flexibility.

	Supplier	Plant	Distribution Center	Warehouse	Customer
Service	Green	Yellow	Green	Green	Green
Profit	Red	Green	Green	Yellow	Green
Capital	Green	Green	Green	Red	Green
SCM Flexibility	Green	Yellow	Green	Green	Red

The user can drill-down to his assigned KPI’s by clicking on the traffic lights. Additional drill-downs from the KPI’s will take the user to actionable information.

Some common performance measurement characteristics are:

- Multi-level KPI’s and charts allow executives to view the overall status of the business.
- Drill downs enable business unit managers to view and compare the performance of strategic business segments, product lines, or regions.
- Additional drill downs allow operational people to view actionable information and exception reports in order to correct problems and improve supply chain performance for their plant or warehouse.
- Action logs ensure follow-up and tracking of correctional measures, responsibilities, and due dates.

Performance Measurement

Supply Chain Results Delivery

Operational Improvement
Software Implementation



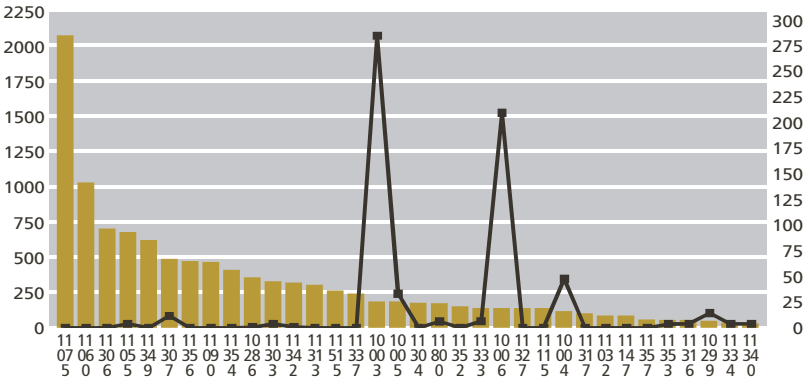
Performance Measurement

Reasons For Performance Measurement

Companies serious about their supply chains implement performance measurements along with their operational improvement and software initiatives. These measures provide a barometer of an organization's supply chain effectiveness and efficiency. Among other benefits, performance measurement provides organizations with:

- Linkages from overall business goals and performance down to operational realities
- Improved accountability, visibility, and financial results in each link of the supply chain
- Tracking and measurement of the savings provided by current and future projects
- Ability to tie the impact of operational changes to the financial success of the business
- Exception management and tracking of corrective actions
- A new focus for the S&OP planning process on measurable financial results and customer service
- An increased understanding of how performance in each area impacts the rest of the supply chain

Average Days of Cover (DOC) vs Average Daily Demand (̄ DD)



Average Days of Cover (DOC) vs Average Daily Demand (̄ DD)

